

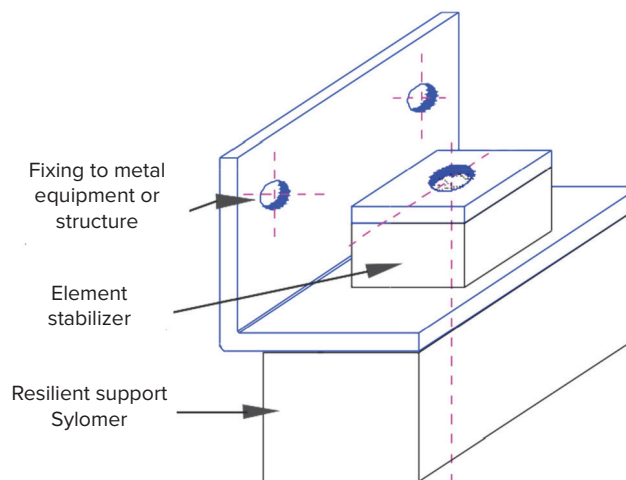
ELASTIC SUPPORT **SILENTIUM Sylomer Fix**



The elastic support SILENTIUM – Sylomer Fix is an element conceived for simple fixations of slabs or walls (with complementary accessory of the system), metallic structures or equipment, having the objective of maximum attenuation of the transmission of structural noises or vibrations.

The kind of support to use will depend on the unitary cargos that it will be subjected to and it shall “work” exclusively to compression.

The stabilizing element, also in a resilient material type Sylomer will depend on the referred support, being always denser and more resistant to compression than this one.

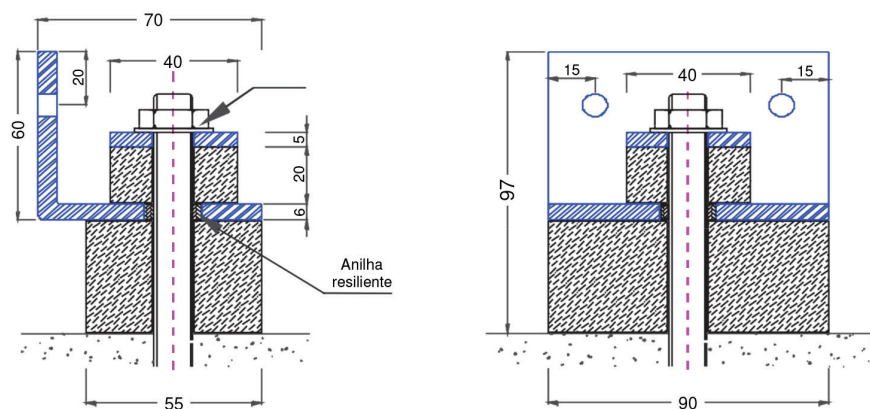


STANDARD ELASTIC SUPORT

UNITARY CARGOS

STANDARD ELASTIC SUPORT	UNITARY CARGOS
SILENTIUM Sylomer FIX 55x55 - 450	35 a 69 Kgf
SILENTIUM Sylomer FIX 90x55 - 450	70 a 139 Kgf
SILENTIUM Sylomer FIX 90x90 - 450	140 a 249 Kgf
SILENTIUM Sylomer FIX 90x90 - 850	250 a 399 Kgf
SILENTIUM Sylomer FIX 90x90 - 1200	400 a 499 Kgf
SILENTIUM Sylomer FIX 120x90 - 1200	500 a 649 Kgf
SILENTIUM Sylomer FIX 120x120 - 1200	650 a 900 Kgf

Drawn scheme of the standard support SILENTIUMSylomer FIX 90x55 - 450



SUPERFICIAL STANDARD TREATMENT

(Metallic Elements): Galvanized or Electrozincd

POSSIBLE OPTIONS

(Under Consultation): Execution of the supports in a measure that the client chooses, whether adjusting the area and type of resilient element, or adjusting the number of supports in function of the cargo.

