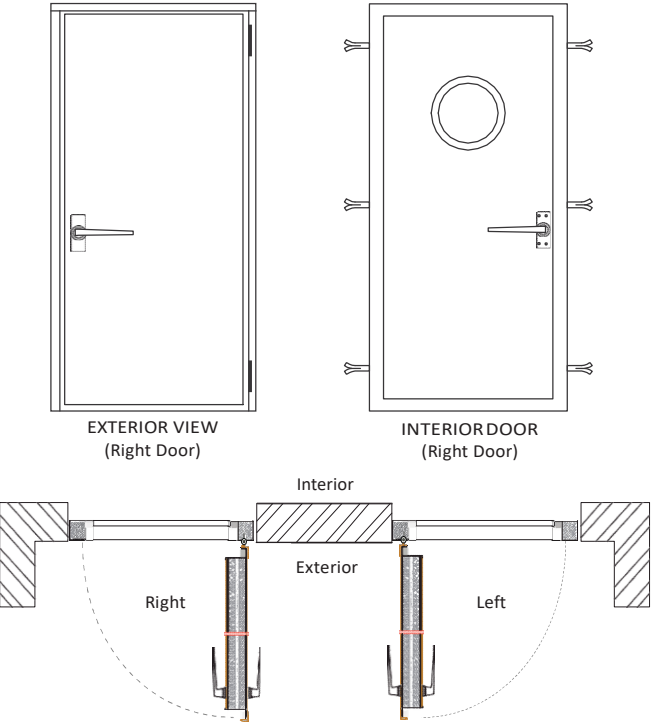


# SILENTIUM PM 43R

Door with wood coated sheets, double stopper, lock with European latch and cylinder, aesthetic handles in inox and without frame on the pavement. Resistant to fire until 30 minutes.



1 Sheet Door

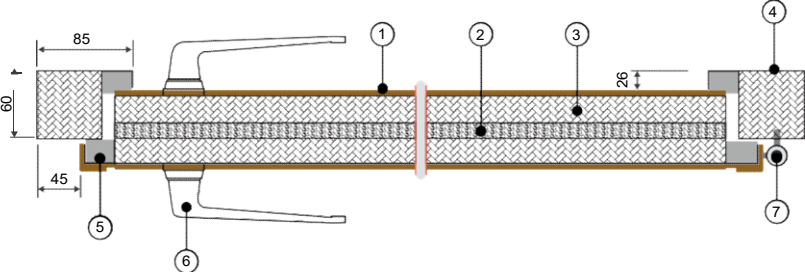


STANDARD Model	FREE PASSAGE MEASURES	EXTERIOR DOOR MEASURES	RECOMMENDED MEASURES FOR THE CONSTRUCTION SPAN (*)	WEIGHT
	L x A (mm)	L x A (mm)	L x A (mm)	(Kg)
SILENTIUM PM 43R-1/700	700 x 2000	870 x 2170	875 x 2175	82
SILENTIUM PM 43R-1/800	800 x 2000	970 x 2170	975 x 2175	91
SILENTIUM PM 43R-1/900	900 x 2000	1070 x 2170	1075 x 2175	99
SILENTIUM PM 43R-2/1400	1400 x 2000	1570 x 2170	1575 x 2175	141
SILENTIUM PM 43R-2/1600	1600 x 2000	1770 x 2170	1775 x 2175	158
SILENTIUM PM 43R-2/1800	1800 x 2000	1970 x 2170	1975 x 2175	175

(\*) It can (and should) vary in function of the type of involving wall and the respective dimensional tolerances.

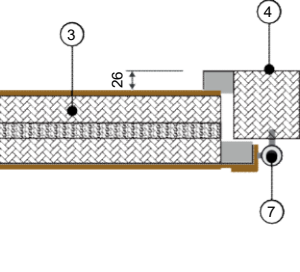


HORIZONTAL CUT



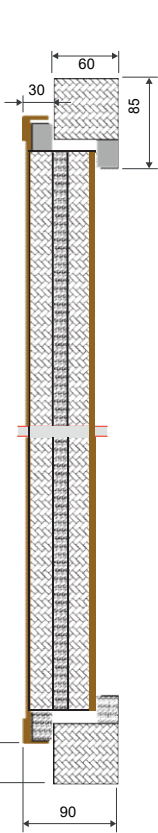
- 1 - Wood coating over steel sheet
- 2 - Heavy Code
- 3 - Panel in a very absorbing plate
- 4 - Pre-frame and metallic frame with absorbent interior

SPACE INTERIOR



- 5 - Sealant in special profile
- 6 - Aluminium handle
- 7 - Adequate hinge to the weight of the door, allowing vertical turing

VERTICAL CUT



## CHARACTERISTICS

Acoustic metallic door with wood coated sheets of 70 mm, including the frame all around the edge. Constituted by a heavy core and two absorbent chambers totally filled with M0 classification fire material. With self-opening system / manual closing in aluminum wedge and double seal in special profile all around the edge. Possibility of being supplied with oblique props and/or hurricanes on the frame for fixation.

## TYPICAL APPLICATIONS

Recording studios, cinema rooms, auditoriums, machine rooms and multiple industrial situations where high levels of acoustic isolation associated with a noble finish are required.

**THICKNESS: 70 mm.**

**Rw = 46dB**

**Test LAIC 8-133/05**

## ACESSORIES/POSSIBLE OPTIONS (UNDER CONSULTATION):

Elimination of the frame in the pavement by substitution of movable sealing, acoustic visors, anti-panic bars, locks with key, inox steel handles and other wood coatings.

## SUPERFICIAL STANDARD TREATMENT:

Standard gamma wood coated sheet (Pine, Mahogany, Sucupira, Izombé, Kambala Beech or Oak)

Frame with primary gray color enamel

