

ELASTIC SUPPORT SILENTIUM 5TA3

Specific materials of the solution SILENTIUM PAV57 for acoustic isolation percussion noises



The specific materials of the solution are a flexible sheet of polyethene and a cushioning screen.

MAIN TECHNICAL CHARACTERISTICS OF THE POLYETHYLENE FLEXIBLE BLADE

- Length (stretched roll): 50 m
- Width (Height of the roll): 2 m
- Thickness: 5mm
- Color: grey
- Specific mass: 30 Kg/m³ +- 10%
- Resistance to compression: 20 KPa (UNE EN ISO 3386-1)
- Dynamic rigidity: 80 MN/m³
- ΔLw : 25 dB (Formalized, with material TA3 with the solution Silentium PAV57)

TYPICAL APPLICATIONS

Resilient and dampening element for the execution of pavements, namely with the solution designated by Silentium PAV57.

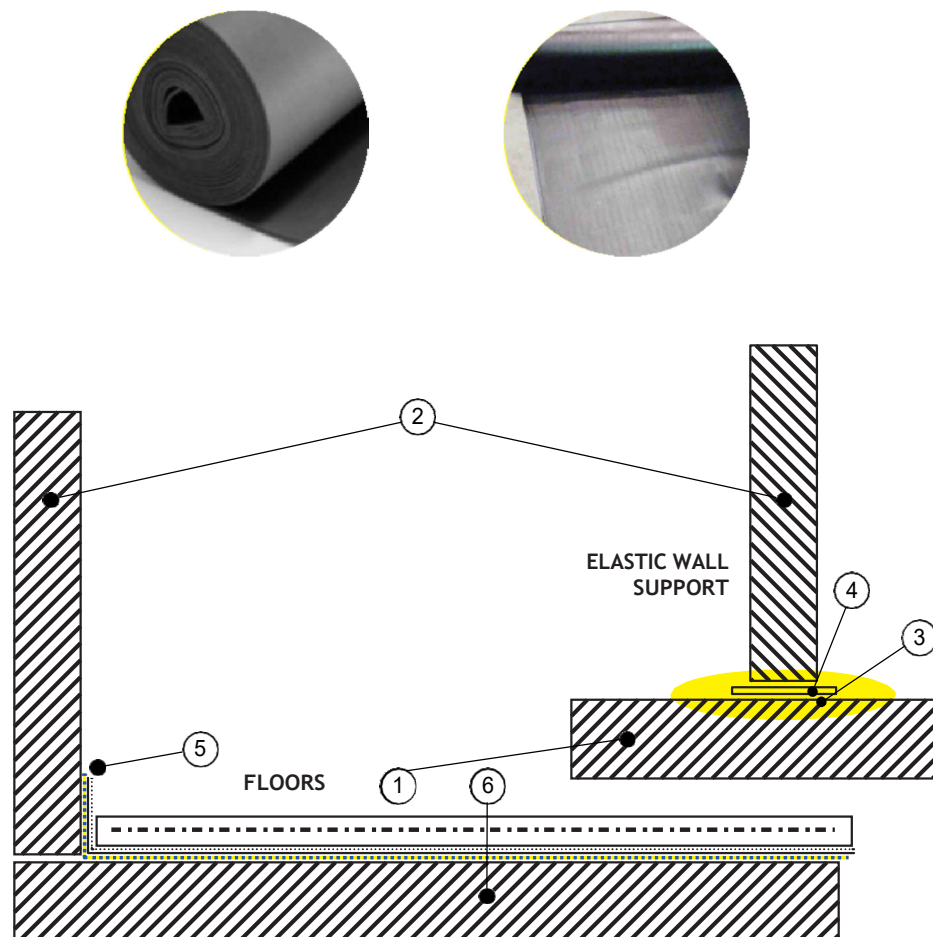
Adequate for house pavements, having the objective the compliance of the index requisite of isolation to noises of percussion previewed in the RGR.

MAIN TECHNICAL CHARACTERISTICS OF THE SHOCK ABSORBER

- Format: rolls with 12000 x 1000 mm • Thickness: 2mm
- Color: black (bituminous element)
- Specific mass: > 3 Kg/m²
- ΔLw : 25 dB (Formalized, with polyethylene foam with 5mm of thickness, solution SILENTIUM 5TA3)

TYPICAL APPLICATIONS

Resilient and dampening element for the execution of surfaces like divisions, fake ceilings, Wall linings and even pavements combined with gypsum board plates, metallic sheets, among others.



$\Delta Lw = 25 \text{ dB}$

Certificate Itecons ACL 074/13 de 01/04/2013

- 1 – Base slab with 14 cm of thickness
- 2 – Wall of the involving
- 3 – Reticulated polyethylene foam of a closed cell with 5 mm of thickness

$\Delta Rw = 7 \text{ dB}$

Certificate Itecons ACL 138/13 de 28/05/2013

- 4 – Dampening Screen TA3, with $\approx 2 \text{ mm}$ of thickness
- 5 – Plastic Sleeve
- 6 – Inertia slab – concrete floating pavement with 5 cm of thickness